

Below you'll find our roundup of the best news and developments across the web, covering everything from real estate highlights, to climate change, and city developments and urban planning.

## REAL ESTATE HIGHLIGHTS



### **THE URGE TO MERGE- The Great Merging: How We Live, Work, and Socialize Have Merged Into Each Other**

How we live, work, socialize and travel have merged into each other, with profound implications for the global industry at the center of selling this dream. How will travel respond? [Read more.](#)



### **NO BUBBLE TROUBLE, SAYS ZILLOW- We're Not in a Housing Bubble, Say Zillow Economists**

Housing bubble fears are actually making matters worse and could drive home prices even higher. [Read more.](#)

## FUTURE OF CITIES



## EU SOLAR HOOFS THROUGH THE ROOF- EU Drive for New Clean Energy Could See Solar Panels on All New Buildings

Commission plans for reducing carbon emissions accelerated by need to cut dependence on Russian fossil fuels. [Read more.](#)



## BLOOMBERG PREACHES FOR INFRASTRUCTURE REACH- Here's How to Get Infrastructure Funds to Smaller Cities

A coalition of nonprofits is starting the Local Infrastructure Hub to help mayors of small and medium-sized U.S. cities compete for \$1 trillion in federal funds. [Read more.](#)

# URBAN PLANNING



## WITH NO FUSS, AIRLINES MOVE PEOPLE BY BUS- American is Expanding its Bus Service from Small Cities to Hub Airports as it Cuts Regional Flying

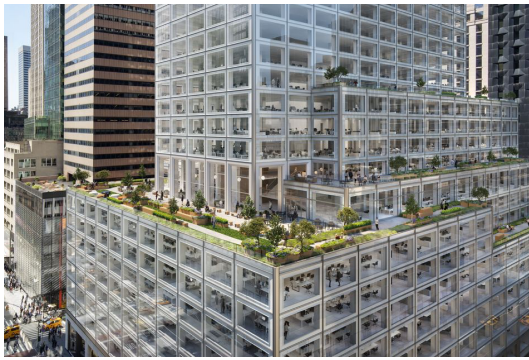
Starting Aug. 16, passengers traveling on American Airlines between PHL and Lancaster, Phi., can take a dedicated shuttle bus instead of driving themselves. [Read more.](#)



## THREE FAULTS THAT DAMN URBAN PLANS- Urban Planning's Three Basic Errors

The reasons for urban planning failure can be summarized by three major themes: statistics, hierarchy, and visualization. [Read more.](#)

# CLIMATE CHANGE



## HIGHER FIRE RISK IS DIRE- Tens of Millions of U.S. Properties Face Wildfire Risk, New Study Says

Almost 80 million U.S. residential and commercial properties face some risk of wildfire damage in the next 30 years.

[Read more.](#)



## GLASS IS CRASS FOR CLIMATE TASKS- NYC's Buildings and Streets Fail to Meet the Challenges of Climate Change

New York City is not doing enough to meet its climate goals. What's worse, the goals aren't enough for the challenges we face. [Read more.](#)

## CRE



## INDUSTRIAL SPACE GAINS PACE- Why Industrial Real Estate Is Driving Power 100 in 2022

To understand power in 2022 one has to understand industrial and logistics real estate which saw average rents rise 16 percent. [Read more.](#)



## INNOVATE IS THE REAL ESTATE DEBATE- Experts Discuss CRE Disruption at Future Forward Conference

Discussing some of the biggest disruptors and opportunities, with a large focus on technology and ESG. [Read more.](#)

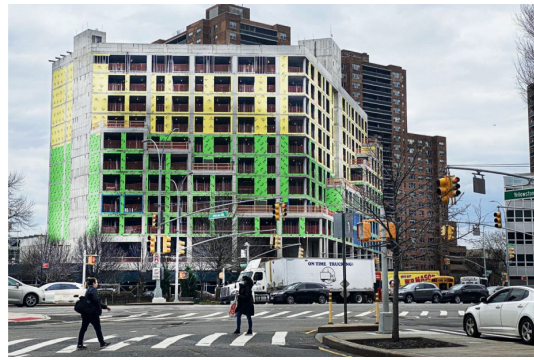
## RESIDENTIAL





### OWNERS MOAN ABOUT THE COST OF LOANS– Many buyers in Contract for New Homes Calculated Monthly Payments on Near-Record Low Mortgage Rates

Many home buyers who signed contracts for new homes in 2021 or early this year calculated monthly payments based on near-record-low mortgage rates of around 3% or less. [Read more.](#)



### BIDEN'S THE MAN FOR HOUSING PLAN– Housing in Brief: The Biden Administration Has a Plan to Boost Housing

His plan includes legislative and administrative actions that will help close America's housing supply shortfall in 5 years. [Read more.](#)

## LAST WORD



### CELEBS CLONE HOMES IN METAVERSE ZONES- Someone Just Paid \$450,000 to be Snoop Dogg's Neighbor in the Metaverse. Here's How You Can Live by a Celebrity, Too.

Parcels of metaverse real estate near other celebrities are selling at premium prices too. In January alone, sales of metaverse real estate topped \$85 million, according



to MetaMetric Solutions. [Read more.](#)

## CAUSES WE SUPPORT

### Tunnel to Towers

Each year since 2015, the Tunnel to Towers Foundation has held the Tunnel to Towers Tower Climb NYC at One World Observatory located at One World Trade Center in New York City.

One thousand participants climb 104 stories, symbolizing strength, hope, and the resiliency of the American spirit. This year Sortis Managing Partner Michael Sander along with his fearless team ALL STAiRs will race to the top to support the foundation and celebrates the life and sacrifice of all 9/11 heroes.

[Learn more.](#)



[Click Here to Donate](#)

## HAVE A GREAT WEEKEND!

[Learn More About the Sortis Funds](#)

To invest and read more about the Sortis Funds, visit our [website](#), or find us on [Linkedin](#). We are happy to answer any questions you may have at [michael.sander@sortis.com](mailto:michael.sander@sortis.com).



No longer want to receive these emails? [Unsubscribe.](#)  
Sortis 240 SE 2nd Ave Suite 200 Portland, OR 97214