

Check out Sortis founder and strategist Paul Brenneke's commentary on the current state of commercial real estate: [READ NOW](#)

Below you'll find our roundup of the best news and developments across the web, covering everything from real estate highlights to climate change, city developments, and urban planning.

ECONOMIC DEVELOPMENT



INFLATION CONTAGION - We May Be Getting Used to High Inflation, and That's Bad News

The rising acceptance of high inflation may have severe consequences for the economy and the public, according to a recent analysis. [Read more.](#)



CONSUMER SPENDING SHOWS NO ENDING - The US Consumer Is Not Ready to Quit

Price elasticity of demand? Maybe next year. [Read more.](#)

REAL ESTATE HIGHLIGHTS



HOME PRICES FELL A TON IN Q1 - Home Prices Fell in Third of the U.S. During First Quarter

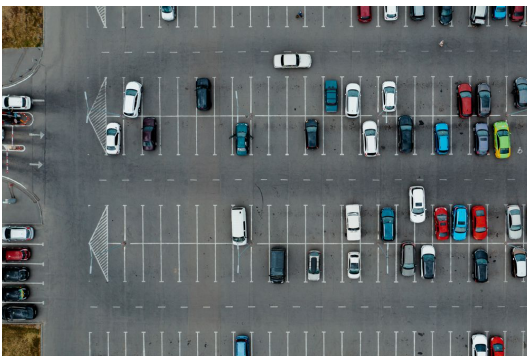
Amid a surge in supply and concerns over affordability, home prices dropped in a third of the United States during the first quarter of 2022. [Read more.](#)



ON HIGH INTEREST DIET HOMES SALES ARE QUIET - 'Quiet Quitting' The U.S. Housing Market: One Group Of Sellers Has Disappeared

As buyers and sellers pull back from the housing market, the traditionally busy spring season has seen a noticeable slowdown. [Read more.](#)

URBAN PLANNING



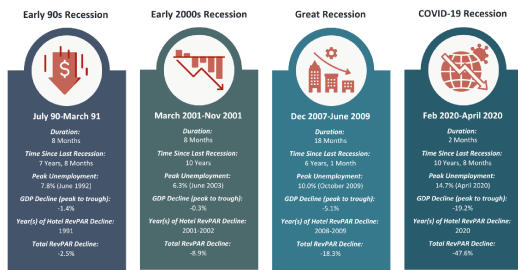
PLANNERS MUST EMBARK ON NEW WAYS TO PARK - The Hidden Force That Shapes Everything Around Us: Parking

As cities across the United States re-examine their land use policies, parking lots are increasingly seen as a prime opportunity for development to address housing shortages [Read more.](#)



WFH TREND IS RETAILERS' FRIEND - The Decline of the Five-Day Commute Is a Boon to Suburban Retail

With many workers opting for remote or hybrid work arrangements, suburban retailers are seeing an influx of customers during the weekdays. [Read more.](#)



INTEREST RATE BUMP CAUSES CRE SLUMP - Impact of Recent Interest Rate Increases on Commercial Real Estate Transactions and Pricing

The continuous rise in interest rates is resulting in a noticeable slowdown in commercial real estate transaction activity and pricing levels due to higher costs of capital. [Read more.](#)

CRE LOANS GROAN IN METRO ZONES- CRE Distress Rose in Majority of 50 Largest MSAs in April

More than half of the largest metropolitan areas in the United States saw an increase in commercial real estate distress in April. [Read more.](#)

CLIMATE CHANGE



BACKLASH BUILDS OVER FED'S CLEAN ENERGY BILLS - 'Over Our Dead Bodies': Backlash Builds Against \$3 Trillion Clean-Energy Push

Proposals to reduce carbon emissions through a carbon tax or other measures are facing a backlash, as businesses and consumers contend with the economic impact of rising energy prices and inflation. [Read more.](#)



WEATHER-WORN STATES PROMPT RISE IN RATES - Home Insurance Premiums Rise as Americans Flock to Weather-Worn States

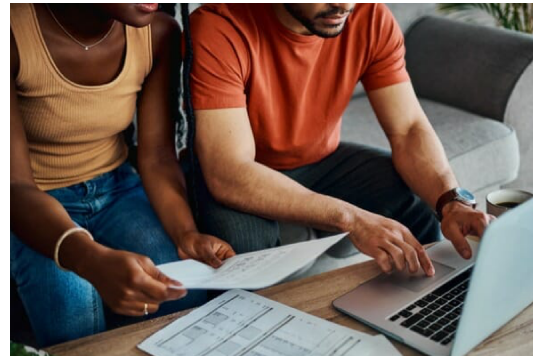
As climate change exacerbates natural disasters and weather-related damage, home insurance premiums in the United States are rising, putting a strain on homeowners. [Read more.](#)

ALTERNATIVE INVESTMENTS



WEALTHY MOVE TO “RISK-ON” GROOVE - Family Offices Move To ‘Risk On’ With Plans To Load Up On Stocks, Private Credit

Family offices are planning to increase their risk exposure by investing in stocks and private credit, as they seek to generate higher returns in an era of low interest rates and a volatile market. [Read more.](#)



PORTFOLIO IMBROGLIO - The 60/40 Portfolio: Alive, Dead, or Somewhere In Between?

As investors navigate the changing economic landscape and a shifting investment landscape, the traditional 60-40 portfolio is being called into question.

[Read more.](#)

LAST WORD



SKELETON, CAVE OR MUSEUM BRAVE? – This Spectacular New Museum Could Be a Skeleton, A Cave, Or The Fabric Of The Universe

The American Museum of Natural History in New York City has opened its doors to a new addition, the Richard Gilder Center for Science, Education, and Innovation, after years of planning and construction. The innovative new building is designed to offer a more interactive and engaging experience for visitors, featuring state-of-the-art technology and exhibits that aim to inspire curiosity and learning about the natural world. The center also aims to promote diversity, inclusion, and accessibility, with features such as multi-lingual signage and universal design principles incorporated into the building's design. [Read more.](#)

CAUSES WE SUPPORT

The Global Fund

The Global Fund is a worldwide movement to defeat HIV, TB, and malaria and ensure a healthier, safer, more equitable future for all. This year, the Global Fund is calling on the world to Fight For What Counts and save 20 million lives.



[Learn more.](#)

[Click Here to Get Involved](#)

[Donate](#)

HAVE A GREAT WEEKEND!

Learn More About the Sortis Funds

To invest and read more about the Sortis Funds, visit our [website](#), or find us on [Linkedin](#). We are happy to answer any questions you may have at michael.sander@sortis.com.



Some of the content featured in the newsletter may be behind a paywall and require a subscription to read.

No longer want to receive these emails? [Unsubscribe.](#)
Sortis 240 SE 2nd Ave Suite 200 Portland, OR 97214

